

FREWARE FOR CONTROL OF DMX FIXTURES

Modern lighting offers fantastic possibilities, however, this also requires a powerful and intelligent control system.

DMXControl permits you to maximise this potential without the need to spend a lot of money. You can download and use the software completely for free. All you just need is one of the many supported DMX interfaces and away you go! You can find tools for each use case, regardless of usage in disco or theater. Also sound-to-light is supported! .

"BRIGHT LIGHTS NEED BRIGHT MINDS - JOIN DMXCONTROL!"



Overview:

- 512 DMX channels
- graphical view of your light show
- versatile sound-to-light options
- supports manifold input devices for control of your light show (keyboard, MIDI device, mouse, joystick, DMX-In)

System requirements

Microsoft Windows 98 / 98 SE / ME / 2000 / XP / Vista

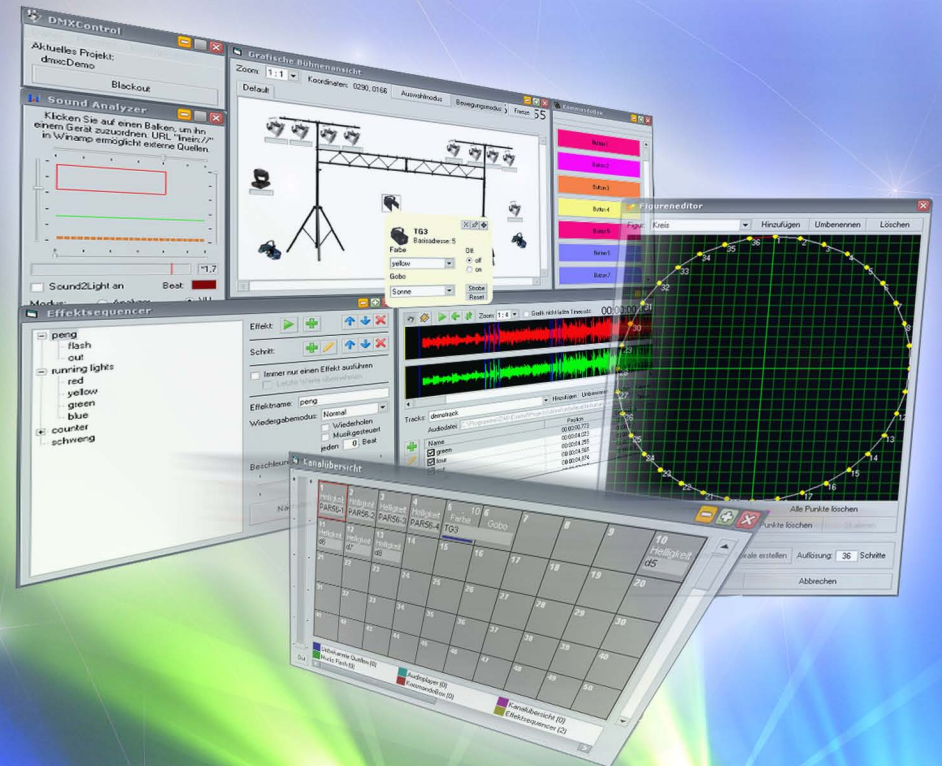
Minimale configuration:

- Intel Pentium III 800 MHz
- 256 MB RAM (recommended 512 MB)
- a supported DMX transmitter

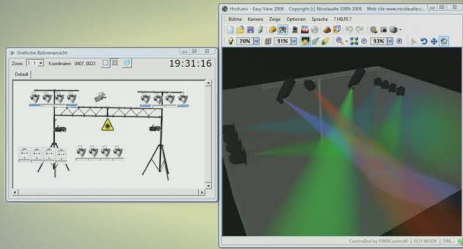
Responsible for project and development
Stefan Krupop
Stefan.Krupop@dmxcontrol.de

Responsible manager
Frank Burghardt
Frank.Burghardt@dmxcontrol.de

Team
Arne Luedtke (Developer DDFCreator)
Frank Brüggemann (Plugin development)
Julien Mintenbeck (GUI design, homepage design)
Christian Otto (Webmaster)
Marten Jahn (Video, demo projects)

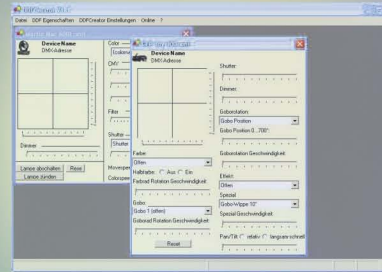


www.dmxcontrol.de



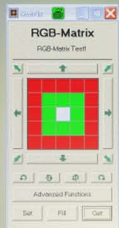
Graphical View

- Devices stage view
- Online control of the fixtures by context menu
- Interface to the 3D-Visualizer „Magic 3D EasyView“



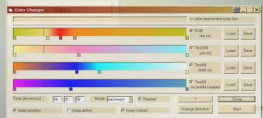
DMX Device Support

- by graphical orientated DDF Creator you can build definitions for many DMX fixtures
- comprehensive fixtures library



Addons

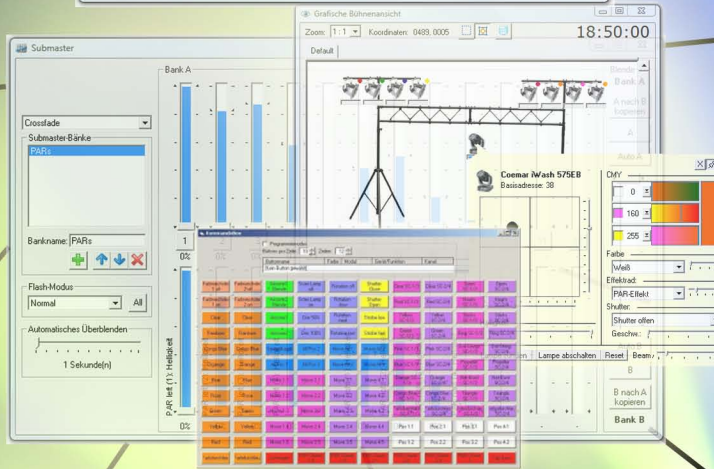
- open Interface for plugins for functional extensions
- versatile plugins available, e.g. Matrix, RGB, Followspot, SoftScanner



Standard features

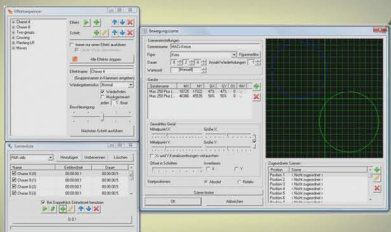
- several scene types, as moving scenes and audio scenes
- tools for scene lists and effects
- fader in several banks
- textbook for synchronous stage directions in theater performances
- powerful command concept

www.dmxcontrol.de



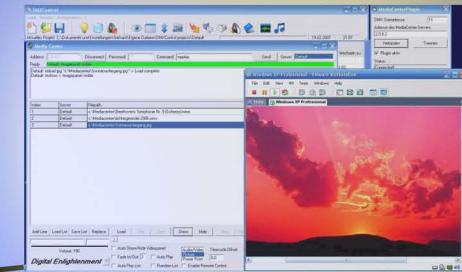
Program control

- flexible “remote control” of software by external pulsts, therefore comfortable operation possible
- mouse, keyboard, joystick
- DMX-In, midi



DMX Interfaces

- support of multiple DMX transmitters e.g. Digital Enlightenment, DMX4All, Enttec, IMG, Soundlight, Next Generation After Glow etc.
- ArtNet support



Multimedia Support

- Interface to Mediacenter of Digital Enlightenment to control videos, pictures and audio

Sound2Light

- automatic control based on WinAmp
- assignment of effects to beats of a song (Audioplayer)
- beat synchronous triggering through Beattool
- Soundanalyzer

